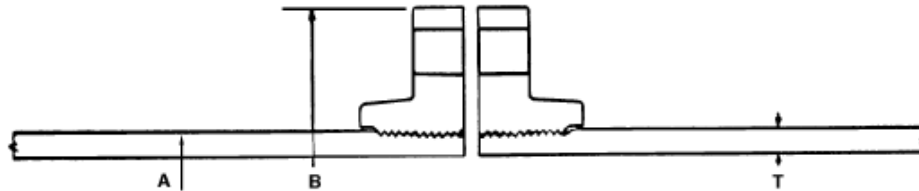


DUCTILE IRON FLANGED JOINT PIPE
Meets all Requirements of ANSI/AWWA C115/A21.15 Standard
Pipe Barrel Meets all Requirements of
ANSI/AWWA C151/A21.51 Standard



FLANGED JOINT PIPE

Flanged Joint Ductile Iron pipe is manufactured for water, steam, sewage, oil and other fluid lines where rigid joints are required. Flanged pipe is available in lengths up to 17'6" *maximum* and 19' 6" *maximum* for 3" and 4" pipe.

Ductile flanged pipe is made in accordance with ANSI/AWWA C115/A21.15 and has a pipe wall thickness that provides for adequate metal under the threads.

The bolt circle and bolt holes of the flanges conform to class 125 flanges shown in ANSI B16.1 and can be joined with Class 125 B16.1 or class 150 ANSI B16.5 (steel) flanges.

NOMINAL INSIDE DIAMETER INCHES	THICK. CLASS	RATED WORKING PRESSURE PSI	DIMENSIONS—INCHES			APPROXIMATE WEIGHT—POUNDS		
			T THICKNESS	A PIPE O.D.	B FLANGE O.D.	ONE FLANGE ONLY	PIPE BARREL PER FT.	17'-6" LENGTH* WITH FLANGES
3	53	250	.31	3.96	7.50	7	10.9	205
4	53	250	.32	4.80	9.00	13	13.8	270
6	53	250	.34	6.90	11.00	17	21.4	410
8	53	250	.36	9.05	13.50	27	30.1	580
10	53	250	.38	11.10	16.00	38	39.2	760
12	53	250	.40	13.20	19.00	58	49.2	980
14	53	250	.42	15.30	21.00	72	60.1	1195
16	53	250	.43	17.40	23.50	90	70.1	1405
18	53	250	.44	19.50	25.00	90	80.6	1590
20	53	250	.46	21.60	27.50	115	91.5	1830
24	53	250	.47	25.80	32.00	160	114.4	2320
30	53	250	.51	32.00	38.75	240	154.4	3180
36	53	250	.58	38.30	46.00	350	210.3	4380

*Rounded-off to nearest five pounds.

LININGS FOR DUCTILE IRON PIPE AND FITTINGS

CEMENT-MORTAR LINING

The first recorded installation of cement-mortar lined cast iron pipe was in 1922 at Charleston, S.C. Since that time, millions of feet of cement-mortar lined cast iron pipe have been installed around the country, helping to maintain high flow characteristics in pipelines carrying aggressive water.

Over the years, improvements have been made in application techniques, the quality of the cement and the curing process. Today, virtually all ductile iron pipe is furnished with this low cost and very effective lining.

We offer a full line of cement-mortar lined pipe and fittings, all in accordance with the requirements of ANSI/AWWA C104/A21.4 Standard.

Generally, cement-mortar linings are not suitable for wastewater applications. Certain industrial wastes and septic sewage can quickly attack the cement causing it to fail. For those installations where these types of waste will be conveyed, we offer Protecto 401 Ceramic Epoxy lining that will provide trouble free service.

PROTECTO 401

Protecto 401 lined ductile iron pipe and fittings provide the maximum protection and the strength necessary to do the job in tough sewer pipe applications. Protecto 401 has successfully been used in hundreds of sanitary sewer applications and has been proven with both laboratory testing and years of actual sewer service on all sizes of ductile iron pipe and fittings. Protecto 401 Ceramic Epoxy Lining was designed and is used as a protection for sanitary sewer conduits.

POLYETHYLENE ENCASEMENT FOR DUCTILE IRON PIPE IN CORROSIVE SOILS

Meets all Requirements of ANSI/AWWA C105/A21.5 Standard

Polyethylene encasement is a proven method of protecting ductile iron pipe in areas of severely corrosive soil. The protection is provided by isolating the pipe from the corrosive environment. A completely air and water-tight enclosure is not necessary.

The dielectric capability of polyethylene also provides shielding against stray direct current at most levels encountered in the field.

Eight (8) mil thick polyethylene tube is furnished in the flat tube widths listed.

More detailed information on polyethylene encasement is available upon request. Both material and installation procedures are specified in ANSI/AWWA C105/A21.5.

RECOMMENDED POLYETHYLENE FLAT TUBE WIDTH BY PIPE SIZE

NOMINAL PIPE SIZE INCHES	FLAT TUBE WIDTH – INCHES (LAYFLAT SIZE)	
	PUSH-ON & MJ	RESTRAINED JOINT
3	14	–
4	16	–
6	16	20
8	20	24
10	24	30
12	27	34
14	30	37
16	34	41
18	37	45
20	41	54
24	54	54
30	67	67
36	81	81