

Chapter 10

Thread-Liner



The Thread-Liner Piping System

The Thread-Liner joint and installation system allows rehabilitation of failing systems without the need to remove existing pipe or excavation.

It's quick to install, strong and durable, and save time and money as easily as it fits into the available work space.

Benefits of Using the Thread-Liner Pipe Rehabilitation System

Special threaded sections of polyethylene pipe are inserted into the old pipe, forming one continuous, leak-free liner.

Once anchored and sealed by grouting, the new system is virtually maintenance-free. There is no excavation or costly restoration, no traffic diversions, no interruption to service, and elimination of infiltration and exfiltration problems.

No Special Training or Equipment.

The Thread-Liner pipe lining system is simple to install. Since it typically weighs less than other piping materials, it is much easier to handle. Maintenance departments can use their own crews - no special training or specialized equipment necessary.

Because of Thread-Liner's ease of installation and short lengths, 95% of drainage and sewer pipe renewal can be off road. This means increased safety for both your workers and motorists. Traffic disturbance can be a thing of the past.

Limited Access in Mind

Standard Thread-Liner comes in a diameter range of 4" to 42", and a standard length of 30' (2.5 feet lay length). Additional diameters and custom lengths may be available upon request. 18" to 36" lengths may be preferred based on the available opening or footprint for manhole-to-manhole or catch basin installations. These sections can be connected together, all with strong water-tight seals. These advantages also make Thread-Liner ideal for pipe renewal within reduced work areas that are in constrained or confined settings.

Simple installation means light duty equipment, less manpower, and minimal disturbance of right-of-way. When considering these benefits, it becomes clear that the Thread-Liner system is a cost-effective way to rehabilitate deteriorating drainage piping systems. A structural solution with a service life of over 100 years, rehabilitation with Thread-Liner may be the perfection answer to your headache.



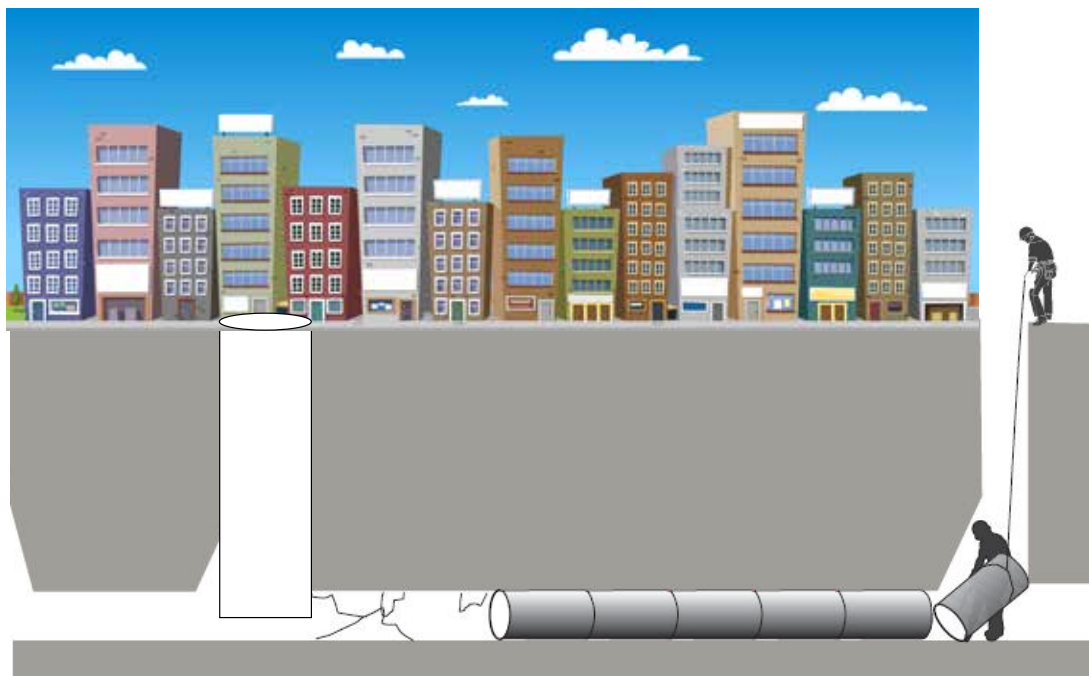
Thread-Liner Applications

Typical applications for Thread-Liner are combined sewer relining, industrial sewer relining, culvert relining and dam rehabilitation.

Compared to pipe replacement, dramatic savings are possible with the following benefits:

- No interruption of services
- Little or no surface damage
- Maintain traffic flow
- Faster project completion
- Maintain or Improve hydraulic capacity
- Structurally strong using pipe that withstands direct burial
- Resistant to seismic demands
- The sealed system prevents entry of ground water, roots, and debris
- A long service life
- High chemical resistance-no corrosion
- Reduced extraneous water allows treatment plants to operate efficiently and owners benefit from lowered volumes for water treatment.

For recommendations and assistance with installation, additional information for Snap-Tite and Thread-Liner can be found in the Snap-Tite Culvert Lining Field Guide for Installation, Handling, and Storage or contact our experts at 1-800-CULVERT.



The Thread-Liner joint and installation system allows replacement of failing systems without the need to remove existing pipe or excavation.