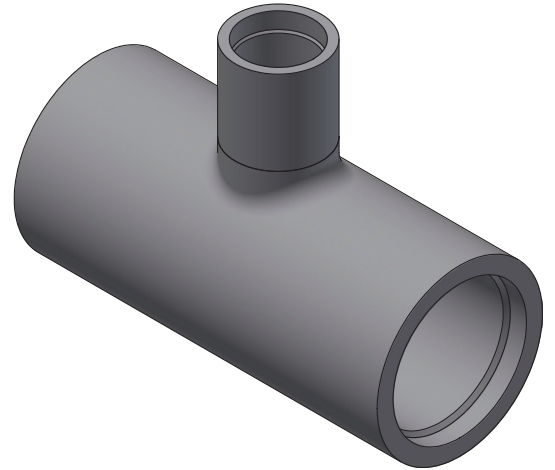


MOLDED OUTLET REDUCING TEE

The larger the main pipe - the more important a reliable reducing outlet tee becomes. Through rigorous testing and decades of experience in the HDPE industry, ISCO has developed a new and innovative molded outlet tee to reduce pipe size off the main that outperforms other alternatives on the market.

Suitable for any end market and application, in sizes ranging from 12" to 24" the new design effectively lowers the chances of failures, simplifies handling and installation, and reduces overall maintenance complexity. This exclusive ISCO product is a lightweight and compact fitting to replace bulky and complex gusseted tees and branch saddles while maintaining a superior level of quality and performance.



Suitable for a wide range of applications:

- Industrial
- Water/Gas Distribution
- Mining
- Landfill
- Irrigation
- Oil and Gas
- Marine





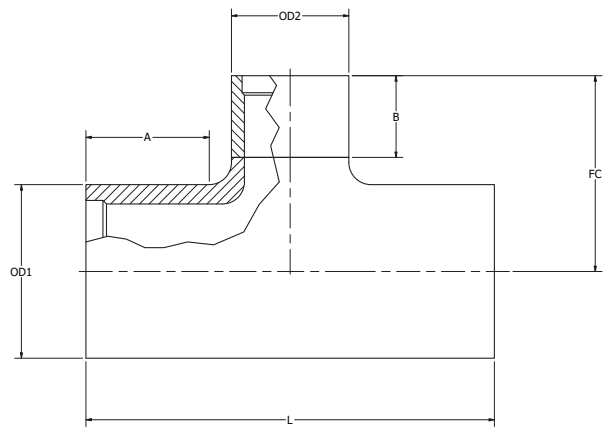
Proven Strength, ASTM Tested

All of our fittings are rigorously tested and ASTM compliant, demonstrating superior strength and reliability.

Manufactured and tested in accordance with ASTM Standard D3261-16, "Standard Specification for Butt Heat Fusion Polyethylene (PE) Plastic Fittings for Polyethylene (PE) Plastic Pipe and Tubing."

Proven to perform as well as or better than gusseted branch saddle reducing tees when subjected to transverse loading of the tee branch, requiring a greater force to induce yield in the material.

Size and Pressure Rating



Nominal Size (in)	OD1 (in)	OD2 (in)	L (in)	A(in)	B (in)	FC (in)
12" x 6"	12.750	6.625	28.000	9.438	7.000	14.875
12" x 8"	12.750	8.625	30.000	9.063	7.000	15.250
16" x 6"	16.000	6.625	28.000	9.438	7.000	16.500
16" x 8"	16.000	8.625	30.000	9.063	7.000	16.875
18" x 6"	18.000	6.625	28.000	9.438	7.000	17.500
18" x 8"	18.000	8.625	30.000	9.063	7.000	17.875
18" x 12"	18.000	12.750	32.000	7.125	9.000	20.750
24" x 6"	24.000	6.625	28.000	9.438	7.000	20.500
24" x 8"	24.000	8.625	30.000	9.063	7.000	20.875
24" x 12"	24.000	12.750	32.000	7.125	9.000	23.750

DR	17	11	9
Pressure Rating	125 psi	200 psi	250 psi

Branch Shear Test Results

