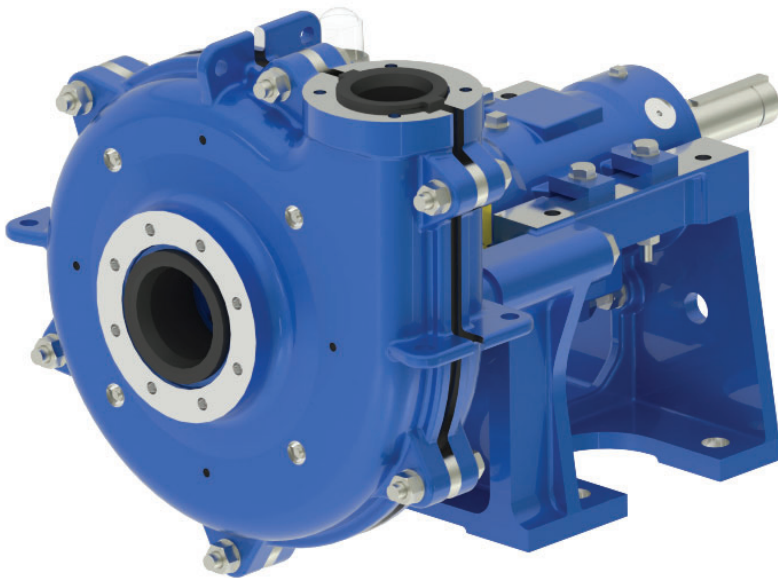


GIW® LCC Gen2 Pump Series

GIW® LCC-R



GIW® LCC-M



GIW® LCC-H



**Wear-Resistant, High-
Performance Slurry Pumps**

GIW® LCC GEN2 SERIES

Solutions for the Most Abrasive and Corrosive Slurry Applications

GIW® LCC Gen2 pumps, crafted with advanced wear-resistant materials and cutting-edge technology, are engineered to withstand the most demanding slurry applications. Ideal for class 1–3 slurries, these pumps excel in handling coarse to fine particles, from solids-laden waste to highly aggressive, abrasive, and corrosive slurries.

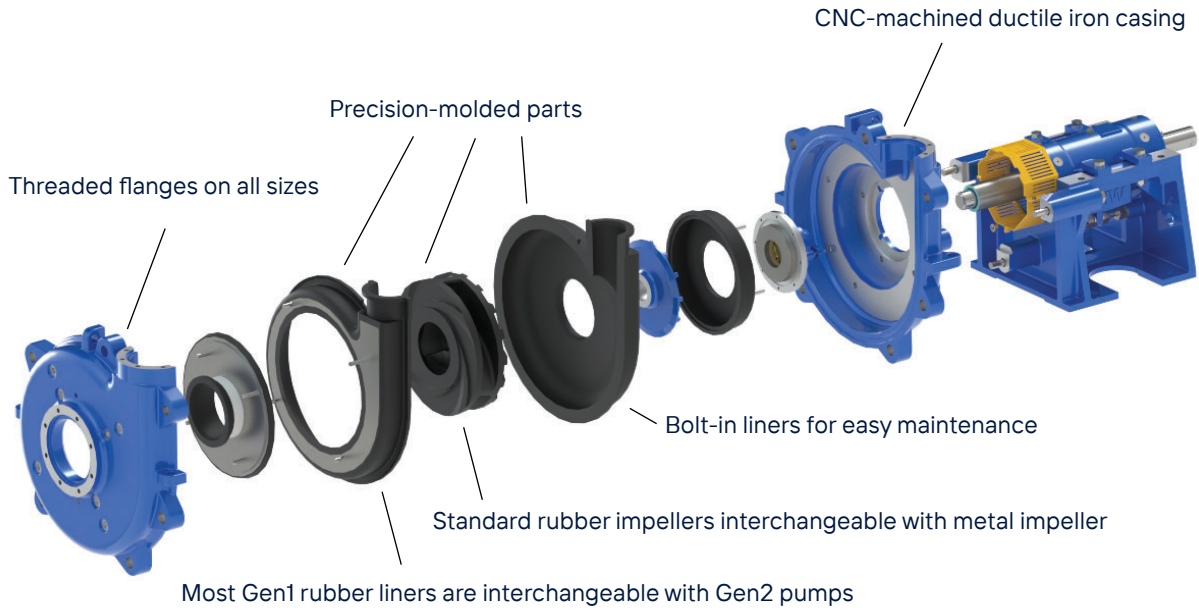
LCC Gen2's rugged design features and wet-end components—made with state-of-the-art proprietary materials—are recognized worldwide for superior abrasion resistance. To further maximize wear life and efficiency, tailored options are available for peak performance in any slurry pumping condition.

Further facilitating maintenance is easy access for nose gap adjustments and liner removal. In addition, the LCC Gen2's front pull-out design simplifies shaft seal replacement, with no need to remove the hub-side casing/hub plate or bearing assembly. LCC Gen2 pumps included thread flange connections at the suction/discharge and all fasteners are zinc-plated for maximum rust resistance.



Wet End Features

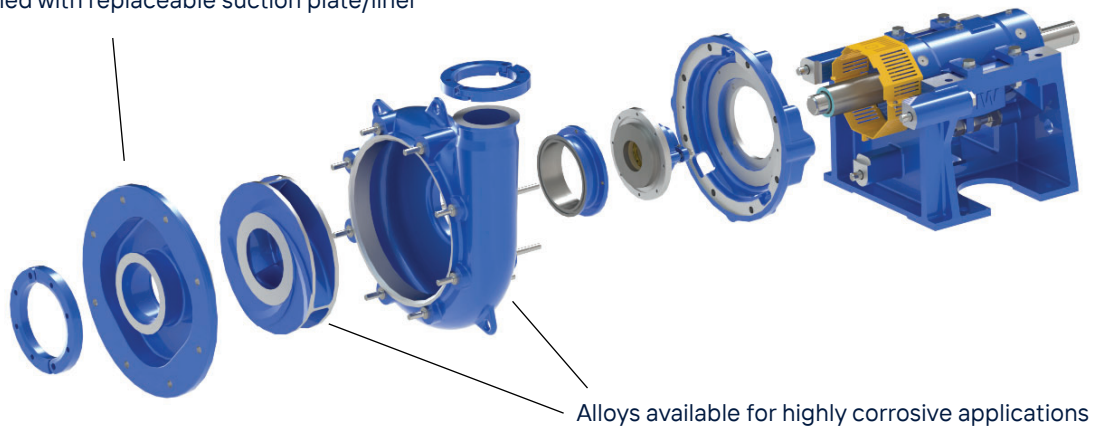
GIW® LCC-R Gen2: Proprietary Rubber Formulations with Double-Wall Construction



*Two-stage operating pressure capacity up to 16 bar (230 psi)

GIW® LCC-M Gen2: Gasite® Casing with Single-Wall Hard-Metal Design

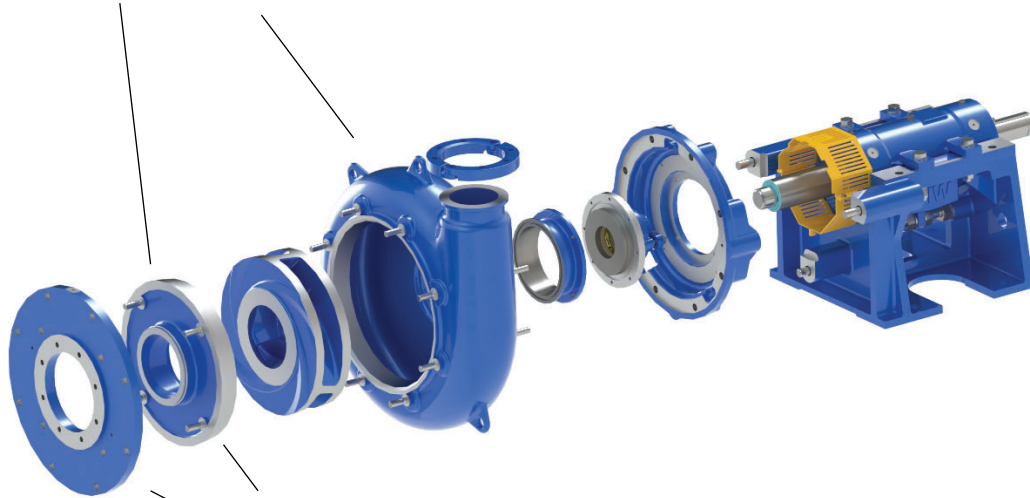
CAD-designed with replaceable suction plate/liner



*Single-stage operating pressure capacity up to 10 bar (150 psi)

GIW® LCC-H Gen2: Gasite® Casing with Single-Wall Hard-Metal Design

Heavier metal sections and hydraulics suited to severe duties



Separate suction liner and non-wearing suction plate (lower replacement cost)

*Two-stage operating pressure capacity up to 16 bar (230 psi)

Impeller

- Twisted three-vane design for high efficiency and low NPSH requirements
- Maximum sphere passage for handling large solids
- Thickened shrouds and vanes for enhanced wear resistance in heavier slurries
- Advanced hydraulic design
- Available in proprietary Gasite® or rubber formulations for superior abrasion resistance



Metal Impeller

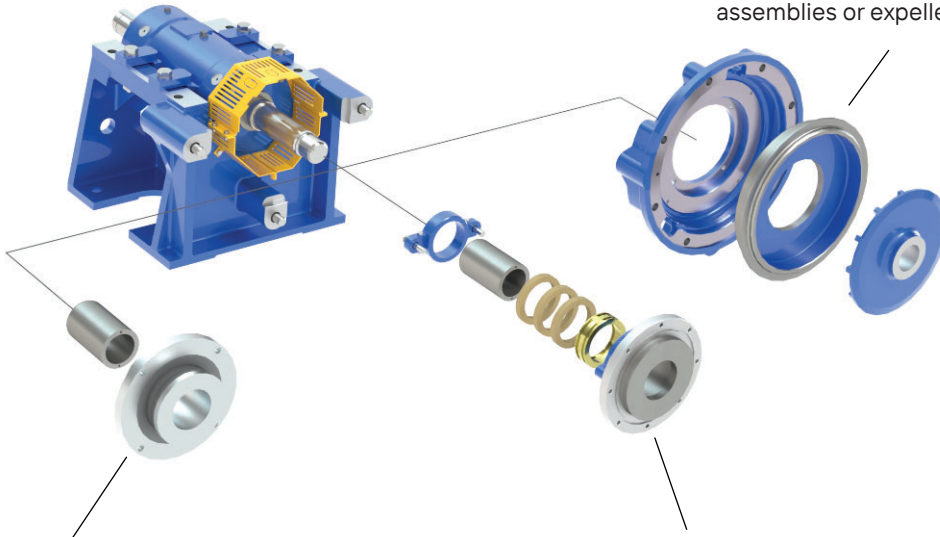


Rubber-Lined

Shaft Seal Assembly Options

Expeller Seal

- For processes without gland water
- Balances gland packing pressures for minimal leakage
- Fully integrated design; no need for special bearing assemblies or expeller plates



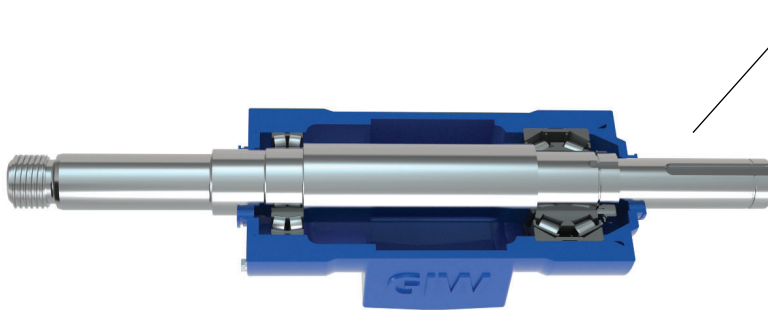
Mechanical Seal

- Suited for minimizing process dilution
- Available for standard and corrosive applications
- Optional KSB LAPIS seal is fully integrated; no adapter plate is required¹

Stuffing Box

- Standard KE design with lantern ring and packing for reduced water consumption
- Throttle bushing design for applications needing additional flush water

Mechanical End



Cartridge Bearing Assembly

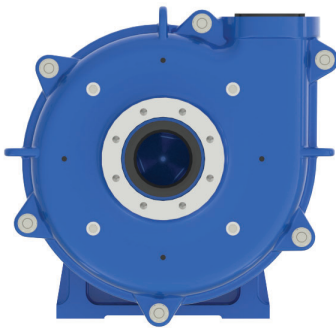
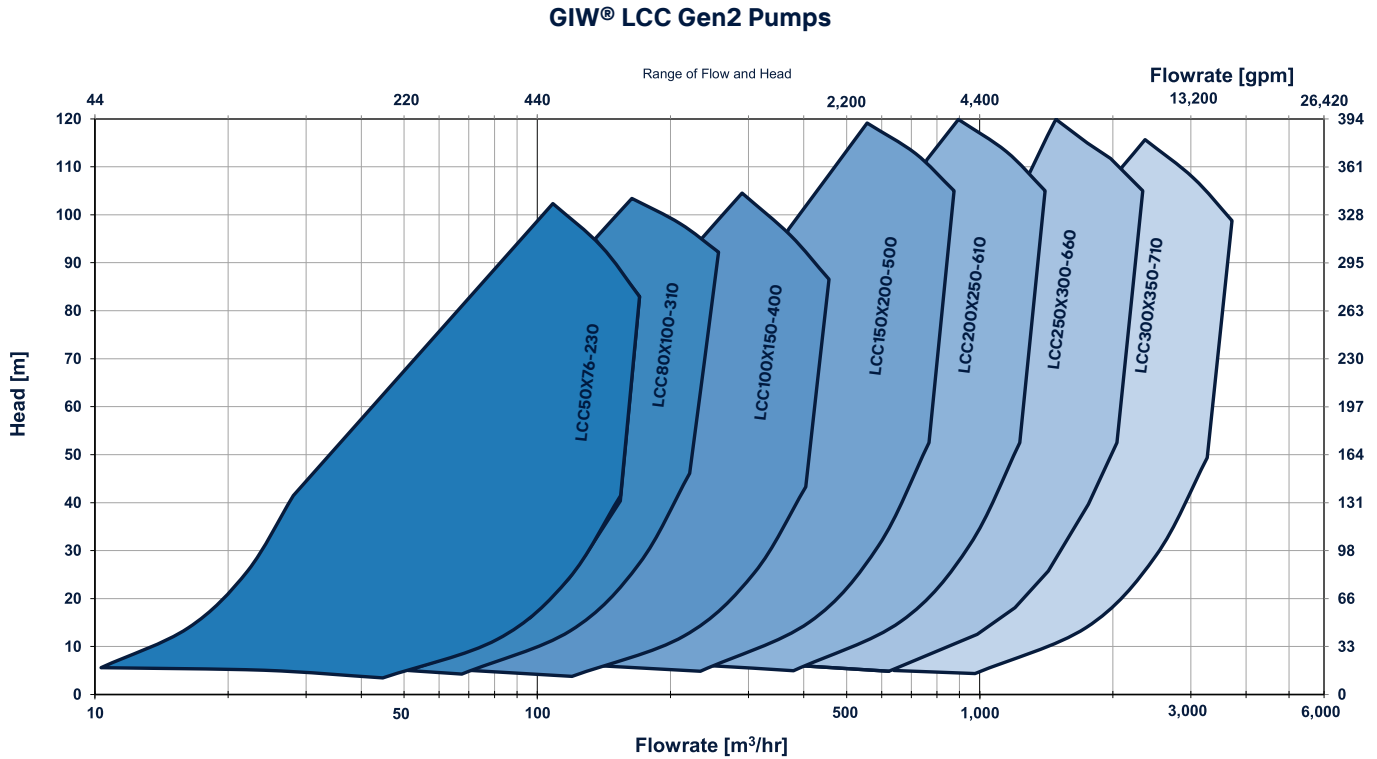
- CNC-machined cast-iron cylindrical housing
- Double-row tapered roller bearings manage mechanical and thrust forces
- Inpro® bearing isolators are standard
- Uses oil or grease lubrication

Pedestal

- CNC-machined cast-iron cylindrical housing
- Self-aligning concentric bearing supports
- Integrated impeller gap adjustment screw

¹ See LAPIS brochure for more details.

GIW® LCC Gen2 Pumps: A Wide-Ranging Selection



Technical Data

Discharge	50 to 300 mm (2 to 12 in)
Flow rates	up to 3,675 m³/h (16,180 gpm)
Total head	up to 105 m (345 ft)
Pressure Rating	up to 16 bar (230 psi)
Temperature Limit	up to 120 C (250 F)

Applications

- Sand and Gravel
- In-plant Processes
- Mineral Processing
- Secondary Grinding
- Tailings
- Chemical Slurry Service
- Coal Preparation



KSB GIW, Inc.
 5000 Wrightsboro Road
 Grovetown, Georgia 30813-2842, USA
www.ksbgiw.com

GIW® Slurry Pumps