

KOBUS Pipe Puller KPP400 Series

Distributed by ISCO Industries

DRESSER
UTILITY SOLUTIONS

KOBUS



THE PROOF IS
IN THE PULLING

© 2026 Natural Gas Solutions North America, LLC – All rights reserved. Dresser Utility Solutions reserves the right to make changes in specifications and features shown herein, or discontinue the product described at any time without notice or obligation. Contact your Dresser Utility Solutions representative for the most current information. The Dresser Logo and all Trademarks containing the term “Dresser” are the property of Dresser, LLC, a subsidiary of Baker Hughes.



dresserutility.com
DUS.KPP.001a-ISCO
4.26

THE PROBLEM

Across the USA and Canada, millions of aging water and gas service pipes are in urgent need of replacement. However, the process is costly, time-consuming, and disruptive.

One of the most pressing issues is poor water quality caused by lead leaching into drinking water supplies from old lead pipes. An estimated 7 to 10 million lead service lines require replacement, but due to incomplete numbers, the actual number remains uncertain. At the current rate of replacement, lead contamination will continue to pose a serious health risk for decades.

Beyond lead pipes, aging copper water service lines and steel gas pipes also require replacement, adding to the challenge of maintaining reliable gas and water infrastructure across North America. Addressing this issue requires innovation and efficiency.

New technologies, such as the Kobus Pipe Puller, are revolutionizing the industry by providing faster, more cost-effective, and safer solutions for replacing aging pipelines. Embracing such advancements is crucial for ensuring safe and sustainable utility services for the future.

THE PIPE PULLER CONCEPT

01 How it works

The process begins by inserting a specially designed steel pulling cable through the old, disconnected pipe. Attached to this cable is a pulling ferrule with an expander. As the Pipe Puller winches the cable in a continuous motion, the ferrule securely grips and extracts the old pipe, while the expander enlarges the borehole left behind, preparing it for the new replacement pipe.

02 Installation of new pipe in a single operation

The new pipe is attached to the pulling ferrule, and is towed into place through the bore created by the old pipe in a single, continuous operation.

03 Recovery of old pipe

As the old pipe is extracted, it is wound onto the Puller spool for efficient handling. The spool's innovative two-half design — featuring male and female sections — allows the quick and easy removal of the old pipe by simply reversing the direction of the hydraulic motors.

04 Success rates

The Pipe Puller boasts an impressive success rate of over 95%, making it the preferred choice for many municipalities, utilities, and contractors. Its robust design and specially engineered pulling cable ensure exceptional reliability and high productivity, allowing for efficient and consistent pipe replacements with minimal downtime.



FEATURES

- The Kobus Pipe Puller is an all-in-one unit with innovative features that make replacing pipes quicker, less disruptive, and safer.
- > Two powerful hydraulic motors capable of delivering a massive 45,000lbs of pulling force, ensuring the vast majority of old underground pipes are removed quickly and efficiently.
 - > A 360-degree rotating foot enables optimal excavator positioning, enhancing accessibility, safety, and efficiency while minimizing traffic disruption.
 - > Uniquely designed male and female spool halves, featuring a precision-engineered helix thread, enable effortless separation for the quick removal of old coiled pipe after extraction.

APPLICATIONS

- The Kobus Pipe Puller is a highly versatile solution, ideal for efficiently replacing both water and gas service pipes.
- > Replaces lead, copper, steel, polyethylene pipes including combinations of different pipe materials with fittings.
 - > Removes up to 80 feet of pipe in a single pull.
 - > Replaces existing pipe sizes from 1/2" to 1" ID with new copper or polyethylene (PE) pipe up to 1.5" ID.
 - > Suitable for use in most ground conditions, including clay.

PROVEN

The Kobus Pipe Puller has been successfully operating in the UK for several years and has been vetted by some of the largest municipalities, gas utilities, and contractors in North America. With thousands of successful replacements across multiple states, its high-quality components ensure durability and make it virtually maintenance-free.



ASSEMBLED IN THE USA



DESIGNED IN THE UK



KOBUS PIPE PULLER KPP400

Kobus provides a fast, cost-effective solution that minimizes disruption, safely removes decommissioned pipes, and reduces the risk of damage to surrounding utilities. Safer than traditional methods, it is ideal for replacing water and gas service laterals, including lead, copper, steel, and polyethylene pipes, up to 80 feet in a single pull.

The KPP400 easily mounts on a compact excavator (typically 35/45 series) and operates efficiently using its auxiliary hydraulics, making it a powerful and versatile tool for pipeline replacement.

- ✔ Easy to move around site
- ✔ Provides safe access to depths between 3 to 15 feet
- ✔ Minimizes manual handling of heavy components
- ✔ Quick Hitch exchange between bucket and Puller



THE KPP400 BENEFITS

Enhanced Productivity & Cost Savings

With millions of aging service pipes requiring replacement across North America and Canada, the Kobus Pipe Puller delivers significant efficiency gains over traditional open-cut trenching.

By minimizing excavation and reinstatement time, the Pipe Puller accelerates the replacement process, allowing more pipes to be replaced in less time. This not only reduces overall costs but also minimizes disruption to local communities.

For contractors, increased speed and efficiency translate to greater competitiveness and the potential to secure more contracts, making the Kobus Pipe Puller a game-changing solution in pipeline replacement.

Reduces Costs & Time



Faster and more cost-effective than open-cut trenching, allowing for quicker project completion and budget efficiency.

Minimizes Disruption



Keeps excavations small, reducing traffic congestion and inconvenience for residents and businesses.

Removes Decommissioned Pipes



Extracts old pipes instead of leaving them underground, preventing future environmental and liability concerns.

Protects Surrounding Utilities



Reduces the risk of damaging nearby infrastructure, ensuring safer and more precise pipe replacement.

Enhances Safety



The self-contained unit, mounted on an excavator, provides better operator control and increased public safety.

Environmentally Responsible



Supports pipe recycling, lowers carbon emissions, and prevents contaminants from leaching into water supplies.

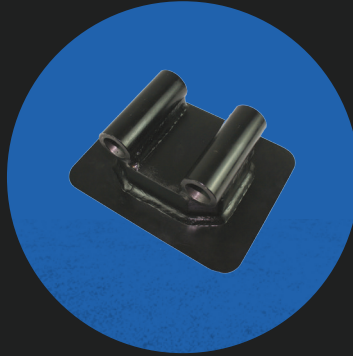


THE PRODUCT



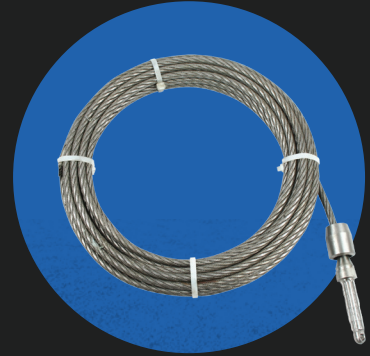
Kobus Pipe Puller KPP400

Compact, self-contained unit which mounts on 35/45 series excavators, and is driven off the auxiliary hydraulics.



KPP400 Adaptor Plate

Adaptor plate to match different models of excavators



Pulling Cable

Available in 8mm (5/16"), 10mm (3/8") and 14mm (9/16") diameter. Lengths up to approx 80'. Supplied with pulling ferrule and expander.



ISCO is an authorized channel partner of Dresser Utility Solutions with proven expertise, innovative solutions and the support to get your project done right.

Need sales or technical support?

ISCO Industries
Louisville, KY

800-633-7131

isco-pipe.com